



Mouse anti FSH b-subunit Monoclonal Antibody

Alternative Name(s): follicle stimulating hormone, beta polypeptide

Order Information

- **Description:** FSH b-subunit
- **Catalogue:** 603-170
- **Lot:** See label
- **Size:** 100ug/200ul
- **Host:** Mouse
- **Clone:** ABM601
- **Application:** IHC(P), ELISA
- **Reactivity:** Hu

ANTIGEN PREPARATION

A recombinant protein of FSH-b subunit

BACKGROUND

This antibody was generated with immunizing antigen specific chemically linked carrier protein. The hybridoma was selected by ELISA positive cloning. This antibody has been purified by affinity chromatography.

PURIFICATION

The mouse IgG is purified by Protein A-Affinity Chromatography according to Isotyping

FORMULATION

This affinity purified antibody is supplied in sterile Phosphatebuffered saline (pH7.2) containing antibody stabilizer

SPECIFICITY

This antibody recognizes human FSH b-subunit protein. The other species are not tested.

STORAGE

The antibodies are stable for 24 months from date of receipt when stored at -20oC to -70oC. The antibodies can be stored at 2oC-8oC for three month without detectable loss of activity. Avoid repeated freezing-thawing cycles.

APPLICATIONS/SUGGESTED WORKING DILUTIONS*

- Western Blot: 0.1-1 µg/ml
- ELISA: 0.01-0.1 µg/ml
- Immunoprecipitation: 2-5 µg/ml
- IHC: 2-10 µg/ml
- Flow cytometry: Not tested
- Molecular Weight: 30.0
- Positive Control: Kidney Tissue
- Cellular Location: Cell Membrane

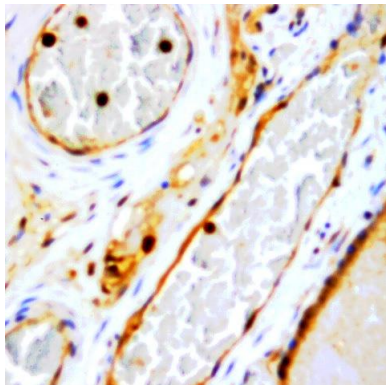
*Optimal dilutions should be determined by researchers for the specific applications.

FOR RESEARCH USE ONLY.

AbboMax, Inc 2528 Qume Drive, Suite 8, San Jose, California 95131, USA
1 408-573-1898 (Tel). 1 408-573-1858 (Fax). www.abbomax.com info@abbomax.com



DATA ATTACHMENTS



Immunohistochemistry: Human placenta (FFPE) stained with Mouse anti-FSH-beta (Clone ABM601) (Cat# 603-170) at 1:200 for 10 min @ RT. Staining of formalin-fixed tissue requires boiling tissue sections in 10 mM Citrate Buffer, pH 6.0 for 10 min followed by cooling at RT for 20 min.

REFERENCES

FOR RESEARCH USE ONLY.

AbboMax, Inc 2528 Qume Drive, Suite 8, San Jose, California 95131, USA
1 408-573-1898 (Tel). 1 408-573-1858 (Fax). www.abbomax.com info@abbomax.com